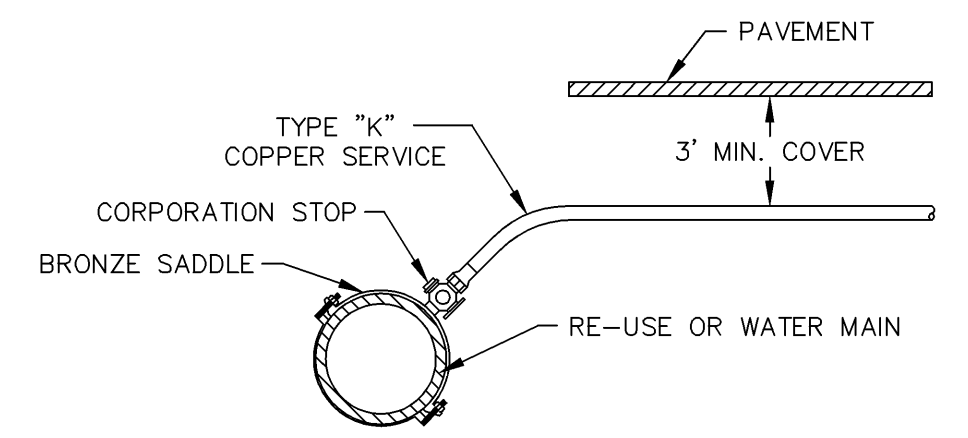
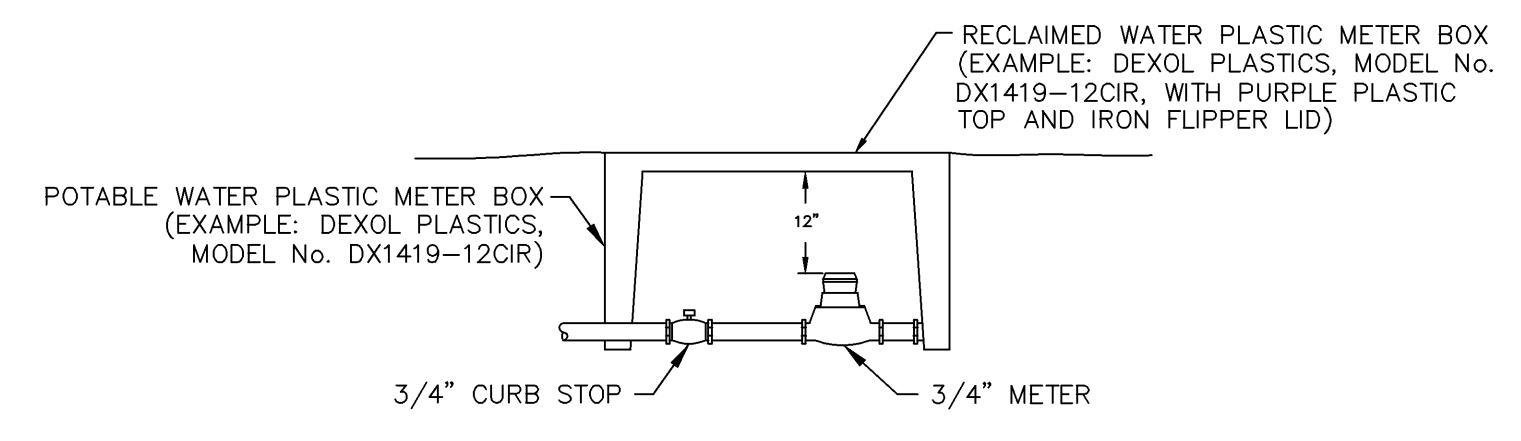


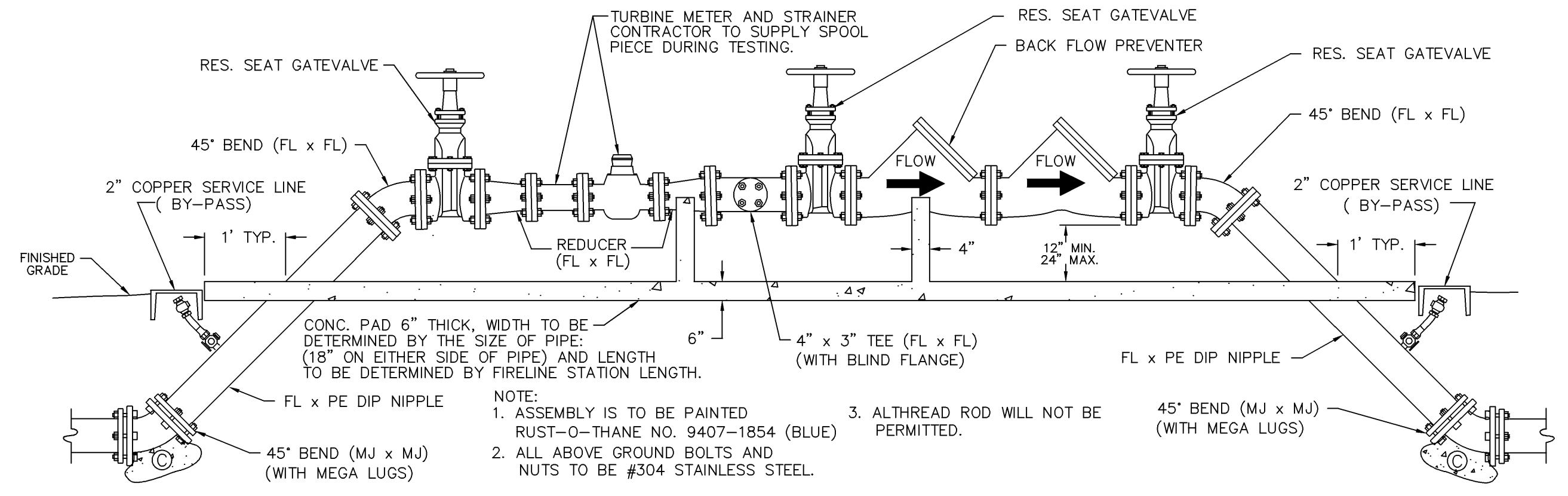
TYPICAL LOT SERVICE LINE LOCATION  
NTS



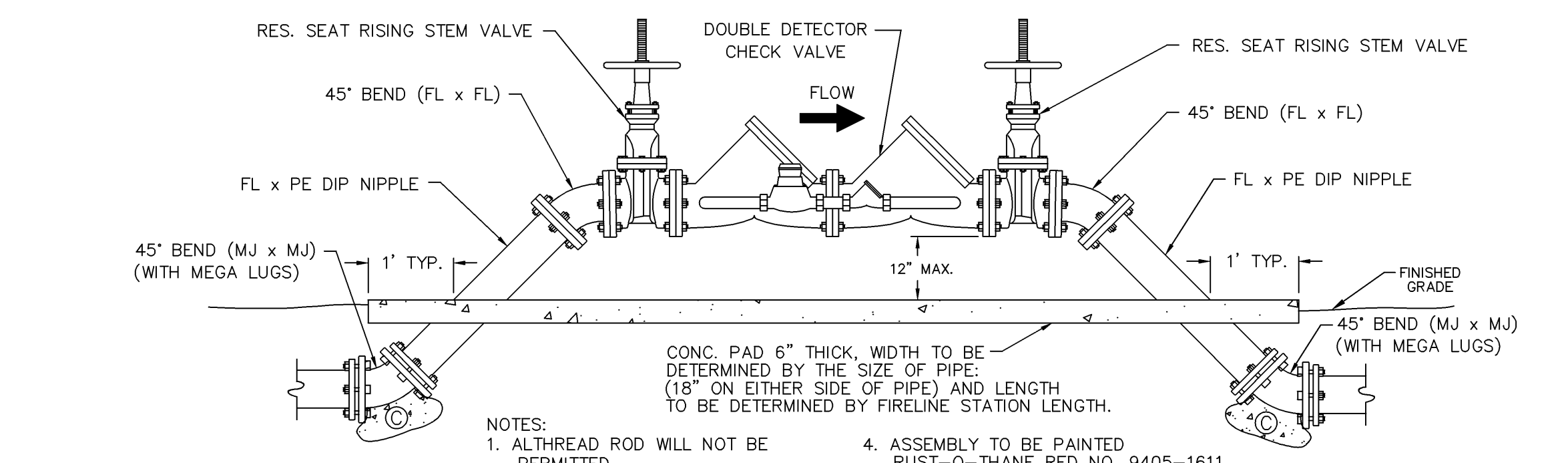
TYPICAL SERVICE LINE  
NTS



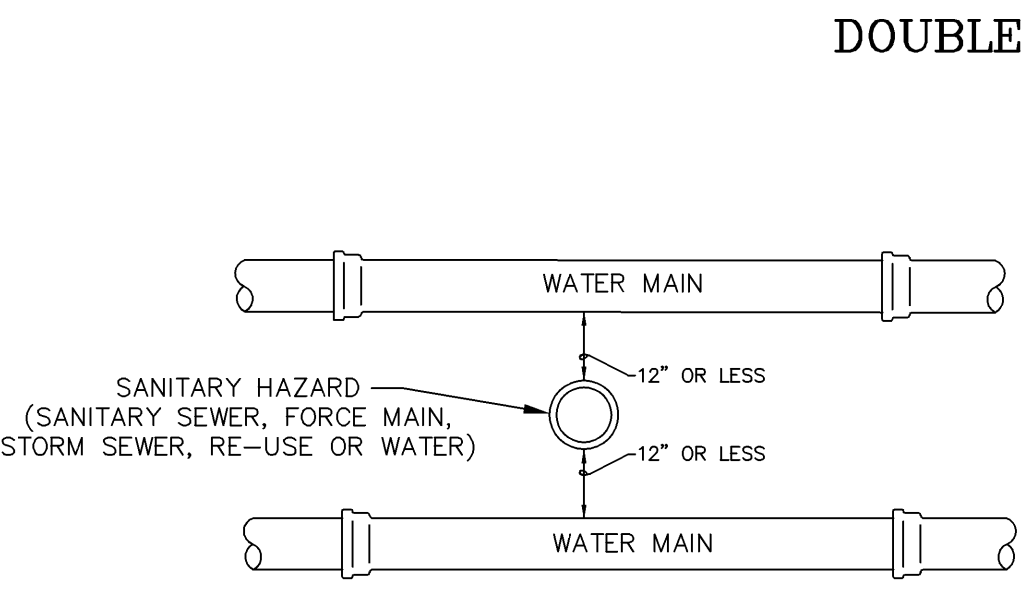
TYPICAL POTABLE WATER  
WATER SERVICE CONNECTION  
NTS



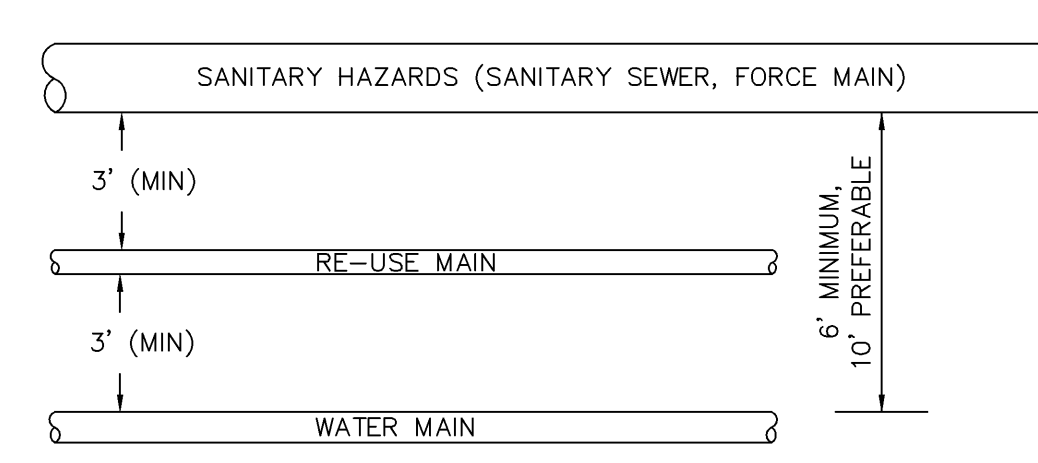
3" & 4" METER W/ BACKFLOW  
PREVENTER ABOVE GROUND INSTALLATION  
NTS



DOUBLE DETECTOR CHECK VALVE  
NTS



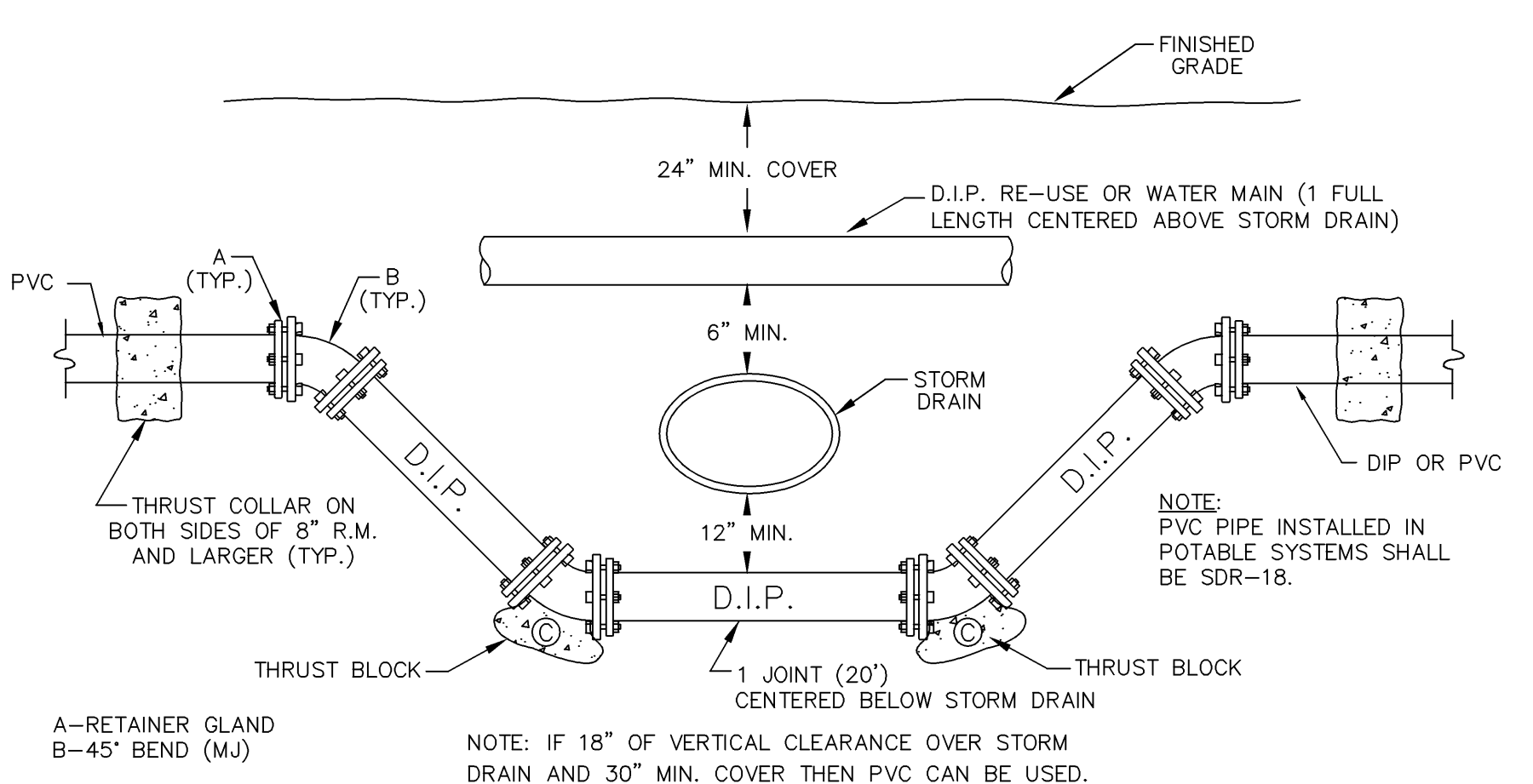
VERTICAL CLEARANCE



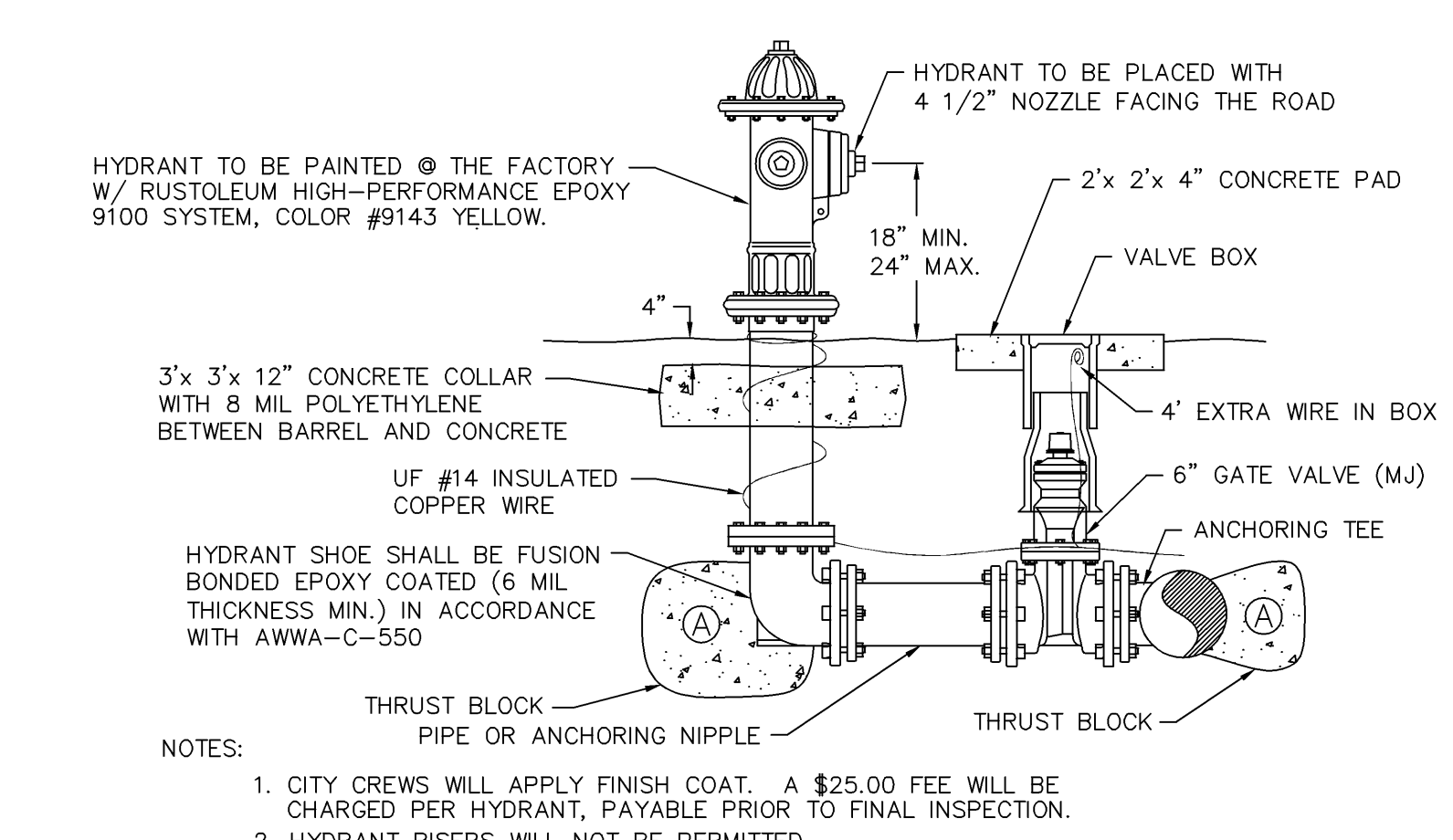
HORIZONTAL CLEARANCE

NOTE:  
HORIZONTAL CLEARANCE AS SHOWN IN PARALLEL INSTALLATION ARE FOR PVC PIPE ONLY. REFER TO 62-555.314(1),(2),(3) & (4) F.A.C. FOR HORIZONTAL SEPARATION OF WATER MAIN AND ALL OTHER UTILITY LINES.

TYPICAL REQUIRED SEPARATION  
NTS



STORM DRAIN CROSSING  
NTS



FIRE HYDRANT DETAIL  
NTS

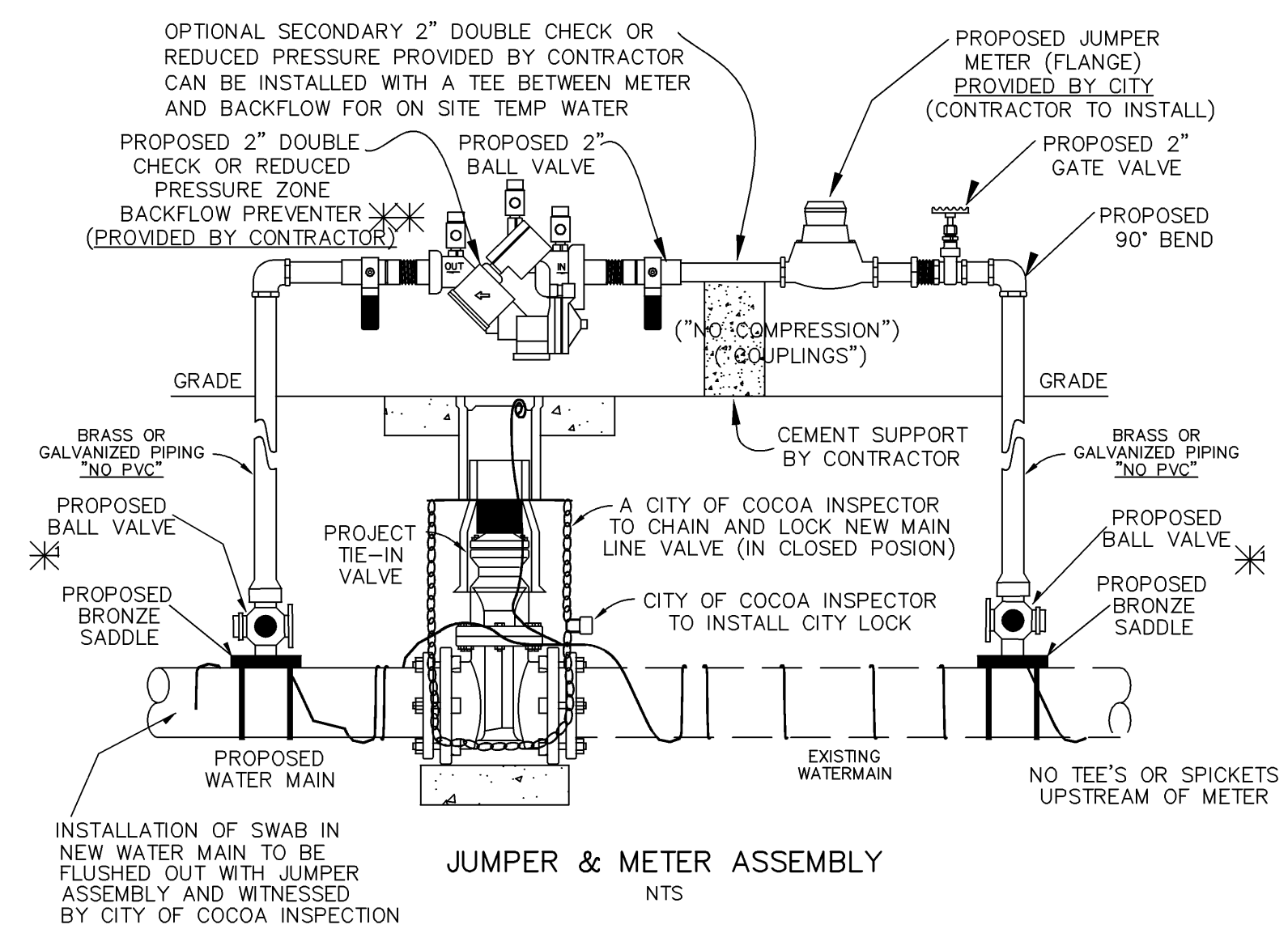
- THRUST BLOCK NOTES**
- 1.) WRAP ALL FITTINGS WITH POLYETHYLENE FILM BEFORE POURING THRUST BLOCK, MAKING CERTAIN TO KEEP CONCRETE AWAY FROM ALL BOLTS, GLANDS, AND FLANGES.
  - 2.) THRUST BLOCKS TO BE POURED AGAINST UNDISTURBED EARTH.
  - 3.) REQUIRED VOLUMES OF BEARING AREAS TO BE AS SHOWN IN CHART. ADJUSTMENTS, IF NEEDED, WILL BE ALLOWED TO CONFORM TO TEST PRESSURE AND ALLOWABLE SOIL BEARING STRESS AS SHOWN IN SPECIFICATIONS.
  - 4.) BEARING AREA FOR TRANSIT BLOCKS ON HORIZONTAL BENDS IS BASED ON A TEST PRESSURE OF 150 P.S.I. AND SOIL BEARING STRESS OF 2,000 P.S.F. THE DEPTH TO THE THRUST BLOCK BASE TO BE EQUAL TO OR GREATER THAN TWICE THE HEIGHT. (EXAMPLE: IF BLOCK IS 2" THICK, THE BASE IS TO BE NO GREATER THAN 4" BELOW GRADE.)
  - 5.) VERTICAL BEND THRUST BLOCKS TO BE THE SAME AS HORIZONTAL BENDS.
  - 6.) BEARING AREA OF THRUST BLOCK TO BE NOT LESS THAN ONE SQUARE FOOT.

MINIMUM BEARING AREA (SQ. FT.)

LETTER	4"	6"	8"	10"	12"	16"	20"
A	1-1/2	2-3/4	5	7-1/4	10-1/4	18	27-1/2
B (22-1/2)	3/4	1	2	3	4	7	11
B (45°)	1	2-1/4	3-3/4	5-1/2	8	13-3/4	21
C	2	4	7	11-1/4	14-1/2	25-1/4	39

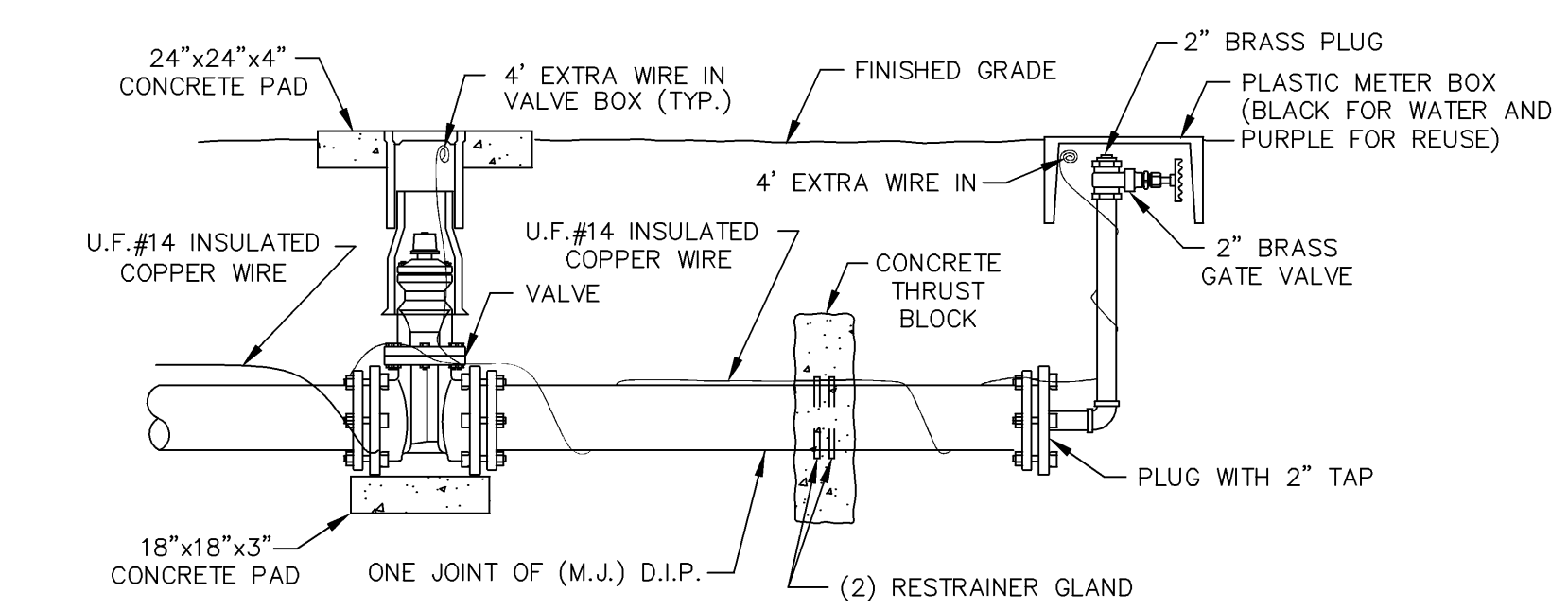
THE FIGURES IN THIS TABLE REPRESENT AREA OF CONCRETE BLOCKING AGAINST THE VERTICAL TRENCH WALL OF UNDISTURBED EARTH IN SQUARE FEET AT 2000 P.S.F. SOIL BEARING CAPACITY.

BUTTERFLY OR GATE VALVE  
AND VALVE BOX DETAIL  
NTS



JUMPER & METER ASSEMBLY  
NTS

NOTES \* BACKFLOW PREVENTER TO BE TESTED AFTER INSTALLATION. CONTRACTOR TO PROVIDE TEST RESULTS TO INSPECTORS.  
\* INLET: AWWA TAPER ("CC")  
\* THREAD OUTLET: F.I.P. THREAD



2" TEMPORARY BLOW-OFF DETAIL

NOTE: ALL WATERLINE CONSTRUCTION TO COMPLY WITH CURRENT CITY OF COCOA CRITERIA.

STANDARD WATERLINE DETAIL SHEET PREPARED FOR:  
**MISSION ESTATES SUBDIVISION**

Brevard County  
Florida

**Bussen - Mayer Engineering Group, Inc.**  
100 PANSHELL STREET • MERITT ISLAND, FLORIDA 32953  
P.H. NO.: (321) 455-0010 • FAX NO.: (321) 454-8885

Date : JUNE 07, 2005  
Scale : AS SHOWN  
Proj. No.: 344001  
Sheet No. 22 of 28

DATE: 08/31/06 REV. PER BREVARD COUNTY COMMENTS  
DATE: 12/20/05 REV. PER SRWMD COMMENTS

Sec.: 36  
Twp.: 23 South  
Rng.: 36 East  
Design by : R.A.B.  
Drawn by : L.B.  
Checked by : J.W.M.

P.E. 36936  
FLORIDA PROFESSIONAL ENGINEER LICENSE NUMBER  
BUSSSEN-MAYER ENGINEERING CERT. NO.: 3535

C:\Dwg\Eng\344001 Mission Estates Subdivision\SRWMD-BREVARD COUNTY PLAN SET\344001-22-25.dwg, 11/22/2006 10:52:07 AM, Ccd3